

# The building blocks of economic complexity

César A. Hidalgo<sup>1</sup> and Ricardo Hausmann

Center for International Development and Harvard Kennedy School, Harvard University, Cambridge, MA 02138

Edited by Partha Sarathi Dasgupta, University of Cambridge, Cambridge, United Kingdom, and approved May 1, 2009 (received for review January 28, 2009)

**For Adam Smith, wealth was related to the division of labor. As people and firms specialize in different activities, economic efficiency increases, suggesting that development is associated with an increase in the number of individual activities and with the complexity that emerges from the interactions between them. Here we develop a view of economic growth and development that gives a central role to the complexity of a country's economy by interpreting trade data as a bipartite network in which countries are connected to the products they export, and show that it is possible to quantify the complexity of a country's economy by characterizing the structure of this network. Furthermore, we show that the measures of complexity we derive are correlated with a country's level of income, and that deviations from this relationship are predictive of future growth. This suggests that countries tend to converge to the level of income dictated by the complexity of their productive structures, indicating that development efforts should focus on generating the conditions that would allow complexity to emerge to generate sustained growth and prosperity.**

economic development | networks

**F**or Adam Smith, the secret to the wealth of nations was related to the division of labor. As people and firms specialize in different activities, economic efficiency increases. This division of labor, however, is limited by the extent of the market: The bigger the market, the more its participants can specialize and the deeper the division of labor that can be achieved. This suggests that wealth and development are related to the complexity that emerges from the interactions between the increasing number of individual activities that conform an economy (1–3).

Now, if all countries are connected to each other through a global market for inputs and outputs so that they can exploit a division of labor at the global scale, why have differences in Gross Domestic Product (GDP) per capita exploded over the past 2 centuries? (4, 5, \*) One possible answer is that some of the individual activities that arise from the division of labor described above cannot be imported, such as property rights, regulation, infrastructure, specific labor skills, etc., and so countries need to have them locally available to produce. Hence, the productivity of a country resides in the diversity of its available nontradable “capabilities,” and therefore, cross-country differences in income can be explained by differences in economic complexity, as measured by the diversity of capabilities present in a country and their interactions.

During the last 20 years, models of economic growth have often included the assumption that the variety of inputs that go into the production of the goods produced by a country affects that country's overall productivity (3, 6). There have been very few attempts, however, to bring this intuition to the data. In fact, the most frequently cited surveys of the empirical literature do not incorporate a single reference to any measure of diversity of inputs or complexity (7).

We can create indirect measures of the capabilities available in a country by thinking of each capability as a building block or Lego piece. In this analogy, a product is equivalent to a Lego model, and a country is equivalent to a bucket of Legos. Countries will be able to make products for which they have all of the necessary capabilities, just like a child is able to produce a Lego model if the child's bucket contains all of the necessary Lego pieces. Using this analogy,

the question of economic complexity is equivalent to asking whether we can infer properties such as the diversity and exclusivity of the Lego pieces inside a child's bucket by looking only at the models that a group of children, each with a different bucket of Legos, can make. Here we show that this is possible if we interpret data connecting countries to the products they export as a bipartite network and assume that this network is the result of a larger, tripartite network, connecting countries to the capabilities they have and products to the capabilities they require (Fig. 1A). Hence, connections between countries and products signal the availability of capabilities in a country just like the creation of a model by a child signals the availability of a specific set of Lego pieces.

Note that this interpretation says nothing of the processes whereby countries accumulate capabilities and the characteristics of an economy that might affect them. It just attempts to develop measures of the complexity of a country's economy at a point in time. However, the approach presented here can be seen as a building block of a theory that accounts for the process by which countries accumulate capabilities. A detailed analysis of capability accumulation is beyond the scope of this article but the implications of our approach will be discussed briefly in *Discussion*.

In this article we develop a method to characterize the structure of bipartite networks, which we call the Method of Reflections, and apply it to trade data to illustrate how it can be used to extract relevant information about the availability of capabilities in a country. We interpret the variables produced by the Method of Reflections as indicators of economic complexity and show that the complexity of a country's economy is correlated with income and that deviations from this relationship are predictive of future growth, suggesting that countries tend to approach the level of income associated with the capability set available in them. We validate our measures of the capabilities available in a country by introducing a model and by showing empirically that our metrics are strongly correlated with the diversity of the labor inputs used in the production of a country's goods, approximated by using data on the use of labor inputs in the United States. Finally, we show that the level of complexity of a country's economy predicts the types of products that countries will be able to develop in the future, suggesting that the new products that a country develops depend substantially on the capabilities already available in that country.

## Methods

We look at country product associations by using international trade data with products disaggregated according to 3 alternative data sources and classifications: First, the Standard International Trade Classification (SITC) revision 4 at the 4-digit level (see ref. 8; the data are available at [www.nber.org/data](http://www.nber.org/data), <http://cid.econ.udavis.edu/data/undata/undata.html>, and [www.chidalgo.com/](http://www.chidalgo.com/)

Author contributions: C.A.H. and R.H. designed research, performed research, contributed new reagents/analytic tools, analyzed data, and wrote the paper.

The authors declare no conflict of interest.

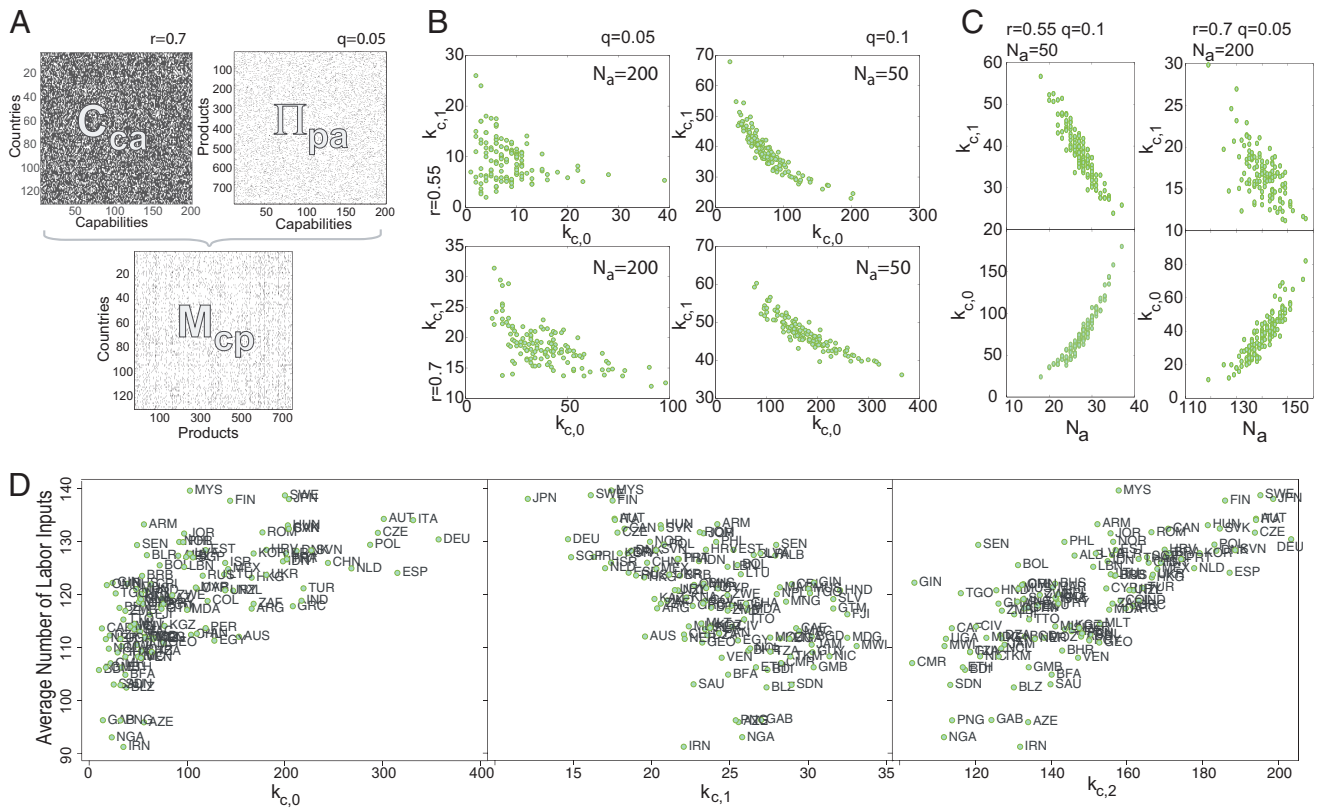
This article is a PNAS Direct Submission.

<sup>1</sup>To whom correspondence should be addressed. E-mail: [cesar.hidalgo@ksg.harvard.edu](mailto:cesar.hidalgo@ksg.harvard.edu).

\*In ref. 4, Maddison presents GDP per capita measures for 60 countries since 1820. In that year, the ratio of the 95th to the 5th percentile was 3.18 but it increased to 17.82 by the year 2000. Today, the U.S. GDP per capita is >60 times higher than Malawi's.

This article contains supporting information online at [www.pnas.org/cgi/content/full/0900943106/DCSupplemental](http://www.pnas.org/cgi/content/full/0900943106/DCSupplemental).





**Fig. 2.** Capabilities and bipartite network structure. (A) We model the structure of  $M_{cp}$  by taking 2 random matrices representing the availability of capabilities in a country and the requirement of capabilities by products and consider that countries are able to produce products if they have all of the required capabilities. (B) The  $k_{c,0}$ - $k_{c,1}$  diagrams that emerge from 4 implementations of the model described in A. (C)  $k_{c,0}$  and  $k_{c,1}$  as a function of the number of capabilities ( $N_a$ ) available in countries for 2 implementations of the model. (D) Average number of labor inputs required by products produced in a country as a function of the first 3 components of  $k_c$ .

number of products, the products exported by Malaysia ( $k_{MYS,0} = 104$ ,  $k_{MYS,1} = 18$ ) are exported by fewer countries than those exported by Pakistan ( $k_{PAK,0} = 104$ ,  $k_{PAK,1} = 27.5$ ). Combining this fact with our third level of analysis, we see that Malaysian products are exported by more diversified countries than the exports of Pakistan ( $k_{MYS,2} = 163$ ,  $k_{PAK,2} = 142$ , *SI Appendix*, Section 8). This suggests that the productive structure of Malaysia is more complex than that of Pakistan, due, as we will show shortly, to a larger number of capabilities available in Malaysia than in Pakistan.

In *SI Appendix* we show that the negative relationship presented in the  $k_{c,0}$ - $k_{c,1}$  diagram is not a consequence of variations in the level of diversification of countries and in the ubiquity of products. We prove this by creating 4 null models (11) that control, with increasing stringency, for the diversification of countries and the ubiquity of products and show that these distributions, per se, are not responsible for the negative relationship observed in the data (see *SI Appendix*, section 6).

**Minimalistic Model.** We show that the location of countries in the  $k_{c,0}$ - $k_{c,1}$  diagram is informative about the capabilities available in a country by introducing a simple model based on the assumption that country  $c$  will be able to produce product  $p$  if it has all of the required capabilities (Fig. 2A).

We implement this model by considering a fixed number of capabilities in each country and represent this by using a matrix  $C_{ca}$ , that is equal to 1 if country  $c$  has capability  $a$  and 0 otherwise. We represent the relationship between capabilities and the products that require them by a matrix  $\Pi_{pa}$  whose elements are equal to 1 if product  $p$  requires capability  $a$  and 0 otherwise.

Using the notation introduced above, together with our only assumption, we can model the structure of the  $M_{cp}$  matrix as:

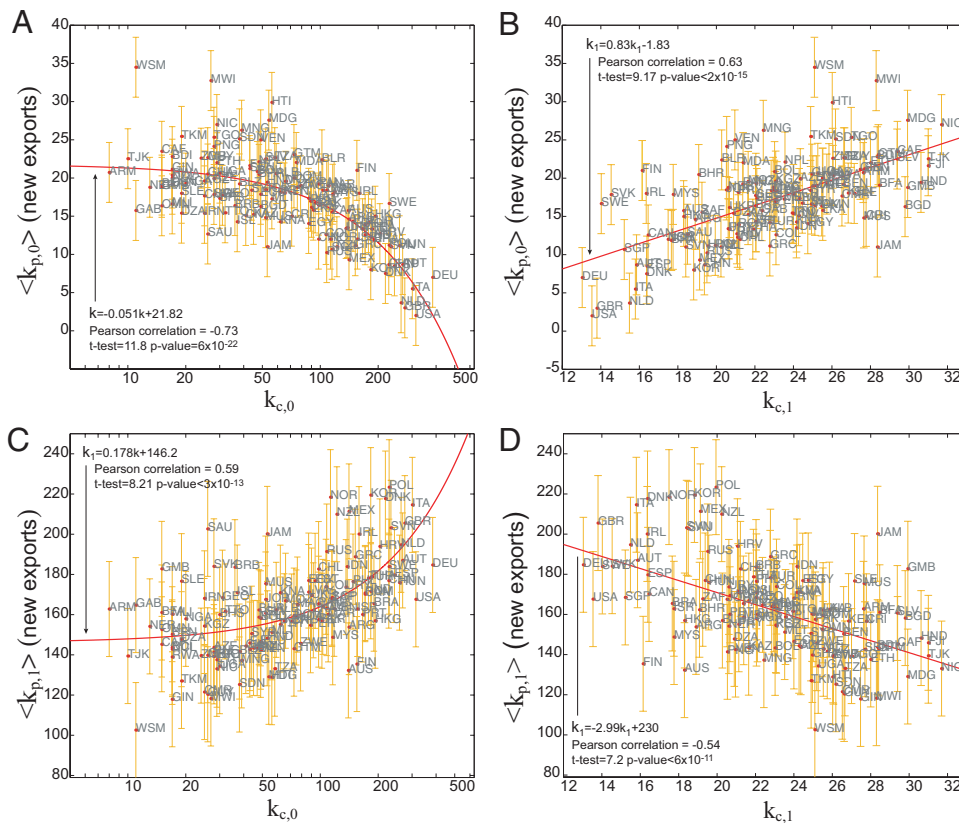
$$M_{cp} = 1 \quad \text{if} \quad \sum_a \Pi_{pa} = \sum_a \Pi_{pa} C_{ca} \quad \text{and} \quad M_{cp} = 0 \quad \text{otherwise} \quad [5]$$

The simplest implementation of this model is to consider  $C_{ca} = 1$  with probability  $r$  and 0 with probability  $1 - r$  and  $\Pi_{pa} = 1$  with probability  $q$  and 0 with probability  $1 - q$ . An emergent property of the matrix resulting from this model is that the average ubiquity of a country's products tends to decrease with its level of diversification for a wide range of parameters (Fig. 2B). We interpret this negative relationship by considering that countries with many capabilities will be more diversified, because they can produce a wider set of products, and that because they can make products requiring many capabilities, few other countries will have all of the requisite capabilities to make them, hence diversified countries will be able to make less ubiquitous products.

The model allows us to test directly whether given this set of assumptions we should expect countries with more capabilities to be more diversified and produce less ubiquitous products. Fig. 2C shows that, in the model, the diversity of a country increases with the number of capabilities it poses, whereas the ubiquity of a country's products is a decreasing function of the number of capabilities available in that country, providing further theoretical evidence that  $k_c$  captures information on the availability of capabilities in a country, and therefore, about the complexity of its economy.







**Fig. 4.** Path dependent development. Average network properties ( $\langle k_{p,0} \rangle$ ,  $\langle k_{p,1} \rangle$ ; measured in 1992) of the new exports developed by a country between 1992 and 2000 as a function of the diversification of a country  $k_{c,0}$  and the average ubiquity of its products  $k_{c,1}$  measured in 1992. (A)  $k_{c,0}$  vs.  $\langle k_{p,0} \rangle$ . (B)  $k_{c,1}$  vs.  $\langle k_{p,0} \rangle$ . (C)  $k_{c,0}$  vs.  $\langle k_{p,1} \rangle$ . (D)  $k_{c,1}$  vs.  $\langle k_{p,1} \rangle$ .

number of employment categories going into the export basket of countries and our family of measures of diversification ( $k_{c,0}, k_{c,2}, k_{c,4}, \dots, k_{c,2N}$ ). We also find a negative correlation between the average number of employment categories and measures of the ubiquity of products made by a country ( $k_{c,1}, k_{c,3}, k_{c,5}, \dots, k_{c,2N+1}$ ) (Fig. 2D). This shows that more diversified countries indeed produce more complex products, in the sense that they require a wider combination of human capabilities, and that  $\bar{k}_c$  is able to capture this information.

**Complexity of the Productive Structure, Income and Growth.** We show that the information extracted by the method of reflections is connected to income by looking at the first 3 measures of diversification of a country ( $k_{c,0}, k_{c,2}, k_{c,4}$ ) versus GDP per-capita adjusted for Purchasing Power Parity (PPP) (Fig. 3A–C). To make these 3 different measures comparable we have normalized them by subtracting their respective means ( $\langle k_N \rangle$ ) and dividing them by their respective standard deviations ( $\text{stdev}(k_N)$ ). As we iterate the method the relative ranking of countries defined by these variables shifts (Fig. 3D and SI Appendix, Fig. S14), making our measures of diversification and ubiquity increasingly more correlated with income (Fig. 3E and SI Appendix, Section 11). This can be illustrated by looking at the position, in the  $k_{c,N}$ –GDP diagrams, of 3 countries that exported a similar number of products in the year 2000, albeit having large differences in income (Pakistan (PAK), Chile (CHL) and Singapore (SGP) Fig. 3A–C). Higher reflections of our method are able to correctly differentiate the income level of these countries because they incorporate information about the ubiquity of the products they export and about the diversification of other countries connected indirectly to them in  $M_{cp}$ , altering their relative rankings (Fig. 3D and SI Appendix, Fig. S14). For example,  $k_{c,2}$  is

able to correctly separate Singapore, Chile and Pakistan, because it considers that in the bipartite network Singapore is connected to diversified countries mainly through nonubiquitous products, signaling the availability in Singapore of capabilities that are required to produce goods in diversified countries. In contrast, Pakistan is connected mostly to poorly diversified countries, and most of its connections are through ubiquitous products, indicating that Pakistan has capabilities that are available in most countries and that its relatively high level of diversification is probably due to its relatively large population, rather than to the complexity of its productive structure. Indeed, we find the method of reflections to be an accurate way to control for a country’s population, as correlations between  $\bar{k}_c$  and population decrease rapidly as we iterate the method (see SI Appendix, Section 11), whereas correlations between  $\bar{k}_c$  and GDP increase as we iterate the method. This is another piece of evidence suggesting that the information captured by our method is related to factors that affect the ability to generate per capita income.

Deviations from the correlation between  $\bar{k}_c$  and income are good predictors of future growth, indicating that countries tend to approach the levels of income that correspond to their measured complexity. We show this by regressing the rate of growth of income per capita on successive generations of our measures of economic complexity (i.e.,  $k_{c,0}, k_{c,1}$  or  $k_{c,10}, k_{c,11}$ ) and on a country’s initial level of income

$$\log\left(\frac{\text{GDP}(t + \Delta t)}{\text{GDP}(t)}\right) = a + b_1 \text{GDP}(t) + b_2 k_{c,N}(t) + b_3 k_{c,N+1}(t),$$

finding that successive generations of the variables constructed in the previous section are increasingly good predictors of growth. In SI Appendix, Section 13, we present regression tables showing that these results are valid for a 20-year period (1985–2005), two 10-year

to use less labor inputs in the production of products than what would be reported from U.S. labor data, accentuating the effect presented in Fig. 2D.



periods or four 5-year periods, and that it is robust to the inclusion of other control variables such as individual country dummies (to capture any time-invariant country characteristic) and outperforms other indicators used to measure the productive structure of a country such as the Hirschman-Herfindahl (12, 13) index and entropy measures (14). A graphical example of this relationship is presented in Fig. 3f, which compares the growth predicted from the linear regression described by Eq. 6 and that observed empirically for the 1985–2005 period and  $N = 18$ .

Finally, we show that the evolution of  $M_{cp}$  exhibits strong path dependence, meaning that we can anticipate some of the properties of a country's future new exports based on its current productive structure. This observation is consistent with the existence of an unobservable capability space that evolves gradually, because the ability of a country to produce a new product is limited to combinations of the capabilities it initially possesses plus any new capabilities it will accumulate. Countries with many capabilities will be able to combine new capabilities with a wide set of existing capabilities, resulting in new products of higher complexity than those of countries with few capabilities, which will be limited by this fact.

We show this using data collected between 1992 and 2000 (we choose 1992 as our starting point because the end of the Soviet Union and the unification of Germany introduce large discontinuities in the number and identity of countries) and consider as a country's new exports those items for which that country had an  $RCA_{cp} < 0.1$  in the year 1992 and an  $RCA_{cp} \geq 1$  by the year 2000. Fig. 4 shows that the level of diversification ( $k_{c,0}$ ) of a country and the ubiquity of its exports ( $k_{c,1}$ ), predicts the average ubiquity ( $k_{p,0}$ ) of a country's new exports and the average level of diversification ( $k_{p,1}$ ) of the countries that were hitherto exporting those products.

This result is related to the idea that the productive structure of countries evolves by spreading to “nearby” products in The Product Space (15–17), which is a projection of the bipartite network studied here in which pairs of products are connected based on the probability that they are exported by the same countries. This last set of results suggests that the proximity between products in The Product Space is related to the similarity of the requisite capabilities that go into a product, because countries tend to jump into products that require capabilities that are similar to those required by the products they already export.

## Discussion

Understanding the increasingly large gaps in income per capita across countries is one of the eternal puzzles of development economics. Our view is that complexity is at the root of the explanation, as argued by both Adam Smith (1) and the recent endogenous growth theories (2, 3), yet empirical research has not advanced along these dimensions because of the absence of adequate measures of complexity. Instead, it has emphasized the

accumulation of a few highly aggregated factors of production, such as physical and human capital or general institutional measures, such as rule of law, disregarding their specificity and complementarity. In this article we have presented a technique that uses available economic data to develop measures of the complexity of products and of countries, and showed that (i) these measures capture information about the complexity of the set of capabilities available in a country; (ii) are strongly correlated with income per capita; (iii) are predictive of future growth; and (iv) are predictive of the complexity of a country's future exports, making a strong empirical case that the level of development is indeed associated to the complexity of a country's economy.

This article has not emphasized the process through which countries accumulate capabilities, but has instead focused on their measurement and consequences. However, the results presented here suggest that changes in a country's productive structure can be understood as a combination of 2 processes, (i) that by which countries find new products as yet unexplored combinations of the capabilities they already have, and (ii) the process by which countries accumulate new capabilities and combine them with other previously available capabilities to develop yet more products.

A possible explanation for the connection between economic complexity and growth is that countries that are below the income expected from their capability endowment have yet to develop all of the products that are feasible with their existing capabilities. We can expect such countries to be able to grow more quickly, relative to those countries that can only grow by accumulating new capabilities.

This perspective also suggests that the incentive to accumulate capabilities would depend, among other things, on the expected demand that new capabilities would face, and this would depend on how new capabilities can complement existing ones to create new products. This opens up an avenue for further research on the dynamics of product and capability accumulation.

Development economics has tended to disregard the search for detailed capabilities and their patterns of complementarity, hoping that aggregate measures of physical capital (e.g., measured in dollars) or human capital (e.g., measured in years of schooling) would provide enough guidance for policy. Our line of research would justify and provide guidance to development strategies that look to promote products (or capabilities) as a way to create incentives to accumulate capabilities (or develop new products) that could themselves encourage the further coevolution of new products and capabilities, echoing ideas put forward by Albert Hirschman (18) more than 50 years ago, but adding the capacity to analyze them in practice.

**ACKNOWLEDGMENTS.** We thank M. Andrews, A.-L. Barabási, B. Klinger, M. Kremer, N. Nunn, L. Pritchett, R. Rigobon, D. Rodrik, M. Yıldırım, R. Zeckhauser, participants at the Center for International Development's Seminar on Economic Policy and the Harvard Kennedy School Faculty Seminar, members of the Center for Complex Network Research at Northeastern University, and the Ratatouille Seminar Series. We acknowledge support from the Growth Lab and the Empowerment Lab at the Center for International Development.

- Smith A (1776) *An Inquiry into the Nature and Causes of the Wealth of Nations* (W. Strahan and T. Cadell, London).
- Romer P (1990) Endogenous technological change. *J Pol Econ* 98:571–5102.
- Grossman GM, Helpman E (1991). Quality ladders in the theory of growth. *Rev Econ Stud* 58:43–61.
- Maddison A (2001) *The World Economy: A Millennial Perspective* (Development Centre of the OECD, Paris).
- Pritchett L (1997) Divergence, big time. *J Econ Perspec* 11:3–18.
- Aghion P, Howitt PW (1998) *Endogenous Growth Theory* (MIT Press, Cambridge, MA)
- Barro RJ, Sala-i-Martin X (2003) *Economic Growth* (MIT Press, Cambridge, MA)
- Feenstra RC, Lipsey RE, Deng H, Ma AC, Ma H (2005) World Trade Flows: 1962–2000. NBER Working Paper 11040. Available at [www.nber.org/papers/w11040](http://www.nber.org/papers/w11040).
- Pastor-Satorras R, Vazquez A, Vespignani A (2001) Dynamical and correlation properties of the internet. *Phys Rev Lett* 87:258701.
- Maslov S, Sneppen K (2002) Specificity and stability in topology of protein networks. *Science* 296:910–913.

- Newman MEJ (2002) Assortative mixing in networks. *Phys Rev Lett* 89:208701.
- Hirschman AO (1945) *National power and structure of foreign trade* (University of California Press, Berkeley, CA).
- Herfindahl OC (1950) Concentration in the steel industry (PhD Dissertation, Columbia University, New York)
- Saviotti PP, Frenken K (2008) Export variety and the economic performance of countries. *J Evol Econ* 18:201–218.
- Hidalgo CA, Klinger B, Barabási A-L, Hausmann R (2007) The product space conditions the development of nations. *Science* 317:482–487.
- Hausmann R, Klinger B (2006) The structure of the product space and the evolution of comparative advantage. CID Working Paper No. 128. Available at [www.cid.harvard.edu/cidwp/128.htm](http://www.cid.harvard.edu/cidwp/128.htm).
- Hidalgo CA, Hausmann R (2008) A network view of economic development. *Developing Alternatives* 12(1):5–10.
- Hirschman AO (1958) *The Strategy of Economic Development* (Yale Univ Press, New Haven, CT).